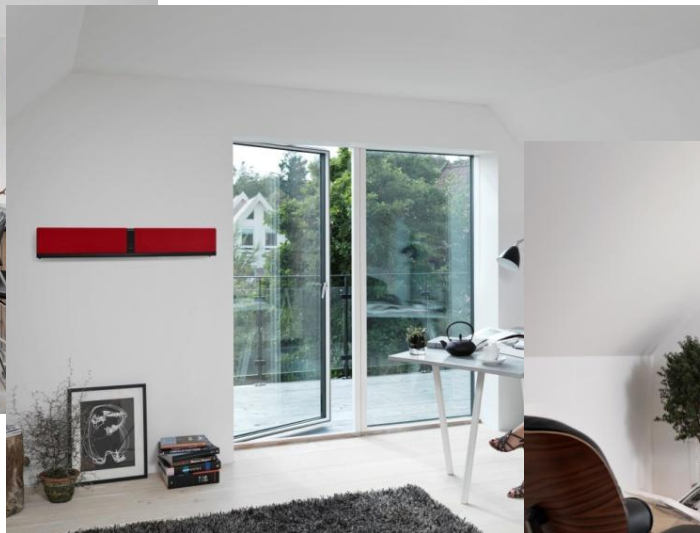


# DALI KUBIK ONE

A complete sound system in a simple, stylish and easy to place package



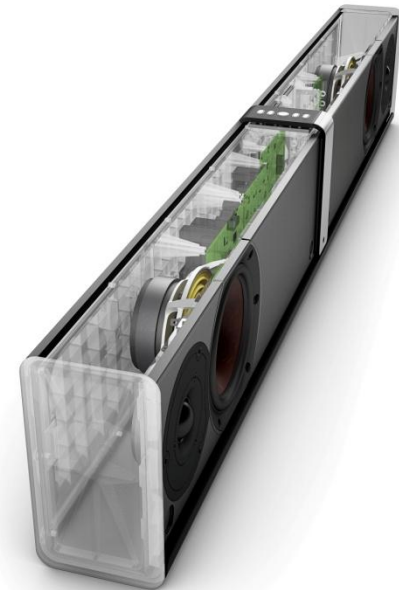
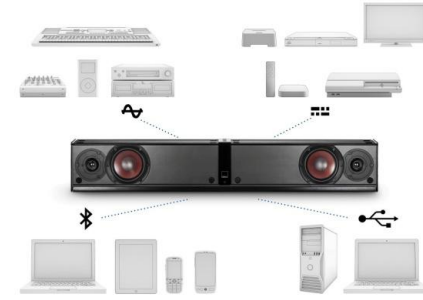
IN ADMIRATION OF MUSIC



# DALI KUBIK ONE - overview

---

- **Flexible sound system**
  - **Connect any audio source, wired or wireless**
    - Optical, Analogue, USB and Bluetooth
  - **Place it anywhere**
    - TV furniture, on the wall, on a shelf...
- **True Hi-Fi audio reproduction**
  - One-piece aluminium chassis
  - 2 x 5.25" Wood fibre cone woofer
  - 2 x 25mm Ultra light soft dome tweeter
  - 4 x 25 Watts Class D amplifier



# DALI KUBIK ONE – features

---

- **Dual optical input**

- Connect both a TV and an audio player
- Best possible audio quality
- Change between inputs with the touch of a button



- **Bluetooth with Apt-X**

- Connect any Smartphone, Tablet and most PC's
- Highly improved audio quality through Apt-X codec
- Not dependent on a Wi-Fi connection



# DALI KUBIK ONE – features continued

---

- **IR learning**
  - KUBIK ONE can understand your existing remote control
  - Control any function on KUBIK ONE with TV/Audio remote
  - Big help when using optical input – Optical is fixed level
- **Auto power on – Signal detect**
  - KUBIK ONE turns on when signal is detected on any input
  - Works on Bluetooth – Just connect and start playing
  - Optical TV input detects power on
  - All other inputs detects on signal



# DALI KUBIK ONE – features continued

---

- **Bass level control**

- **Neutral**

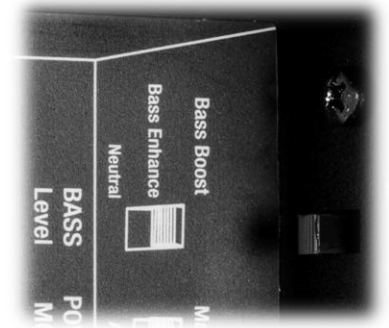
- Authentic bass level for music or TV listening

- **Bass Enhance**

- Slightly enhanced bass level for music or movie sound in larger rooms

- **Bass Boost**

- High bass level for music or movie sound in a big room



# DALI KUBIK ONE – colour options

---



**Ice**



**Red**



**Black**



**Azur Blue**



**Lime Green**



**Orange**



**Purple**



**Mist Grey**



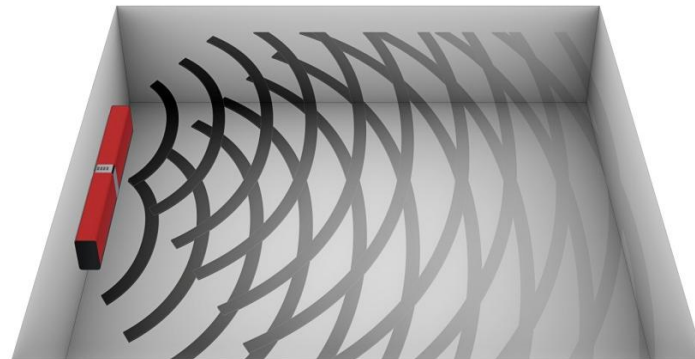
**Petrol Blue**

# DALI KUBIK ONE – audio features

---



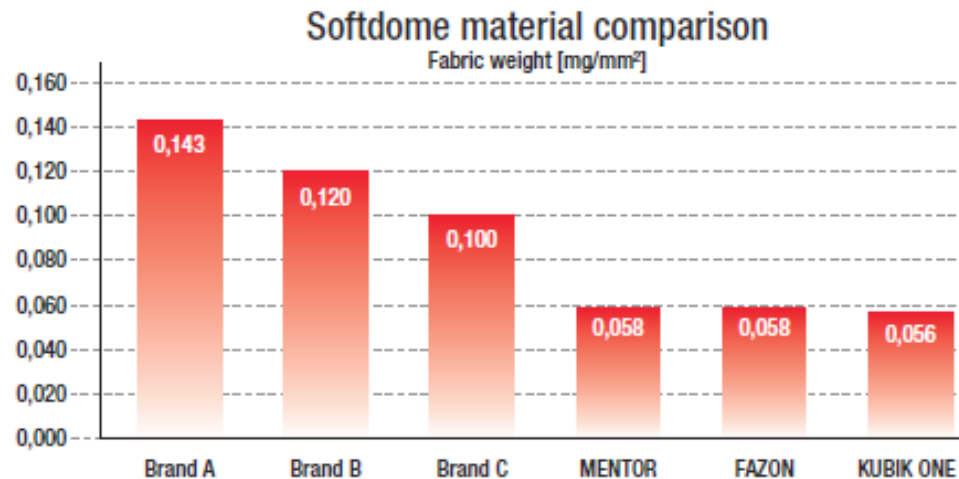
- **Two 5.25" woofers**
  - **DALI's trademark wood fibre based woofers**
    - Renders even the smallest micro detail in the signal
  - **Low-loss rubber surround**
    - Low distortion, highly detailed audio reproduction, even at low volume
- **Powerful magnet motor system for a closed cabinet**
  - Delivers a controlled but powerful audio signal that easily fills the room





# DALI KUBIK ONE – audio features continued

- **Two 25mm Ultra soft dome tweeters**
  - **Ultra light-weight weave fabric**
    - Brings the mid-range and high-end frequencies alive
  - **Powerful ferrite magnet**
    - Improved power handling, quickly disperses the heat generated around the fast moving voice coil





# DALI KUBIK ONE – specifications

KUBIK ONE TECHNICAL SPECIFICATIONS

KUBIK ONE	
Frequency Range +/-3dB [Hz]	48-22,000
Maximum SPL [dB]	103 per channel
Crossover Frequency [Hz]	3,000
Crossover Principle	DSP based digital IIR, 2. order
High Frequency Driver	2 x 25 mm Soft Textile Dome
Low Frequency/midrange Driver(s)	2 x 5.25" Wood Fibre Cone
Enclosure Type	Closed box
Continuous IEC Power Output [RMS watt]	4 x 25
Input Impedance [ $\Omega$ ]	25k
Connection Input(s)	3.5 mm mini jack, RCA (Cinch) Optical (Toslink), USB (Micro)
Wireless Input(s)	Bluetooth™ Apt-X
Connection Output(s)	Sub out
Amplifier Type	Fully digital Class D, open loop type
Recommended Placement	Keyhole mounting On-Wall, Shelf, Stand
Recommended Distance From Wall [cm]	0 - 30
Functions	IR Learning, Power On/Off, Source Select, Standby (Auto Power) On/Off, Volume, Volume (Gain)
Standby Power Consumption [W]	<0,5
Maximum Power Consumption [W]	150
Dimensions (HxWxD) [mm]	162 x 980 x 102
Weight [kg]	9,6
Accessories Included	Mains Cable (1.5m), Manual, Remote Control, Bumpers
Optional Accessories	Interchangeable Grilles
Finish	Black Grille, Ice Grille, Red Grille

